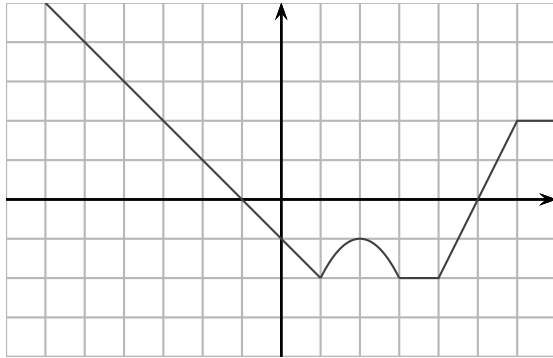
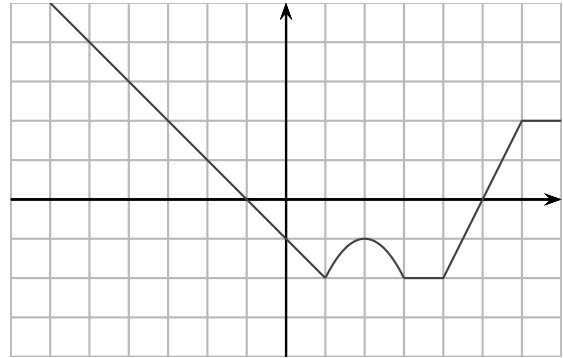


Une fonction f admet un graphe dessiné en gris (les deux extrémités se prolongent par des droites). Esquisser le graphe des fonctions f_1, f_2, \dots, f_9 .

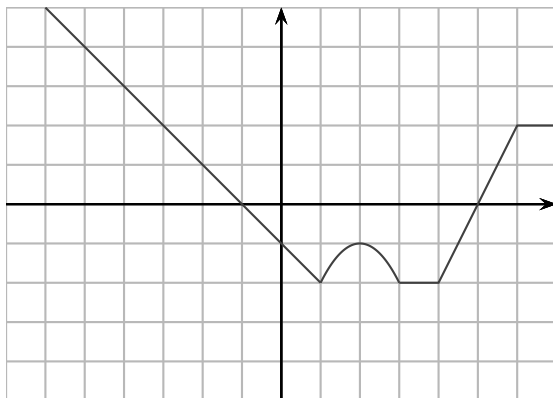
$$f_1(x) = f(x) + 3$$



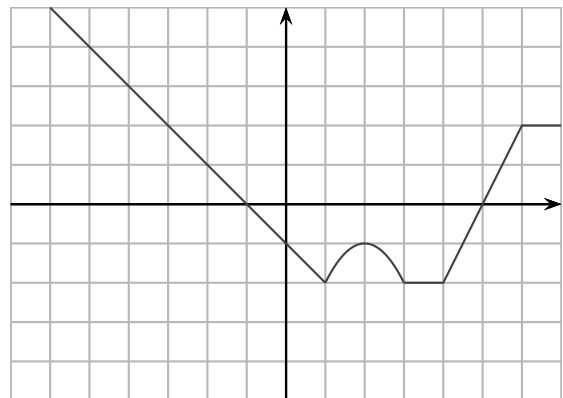
$$f_2(x) = f(x + 3)$$



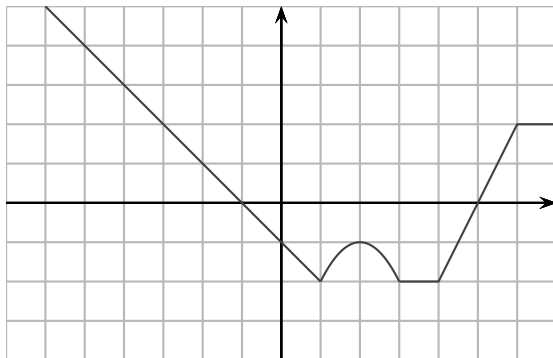
$$f_3(x) = 2 \cdot f(x)$$



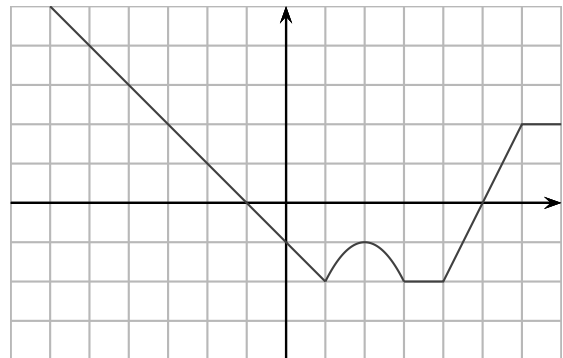
$$f_4(x) = f(2x)$$



$$f_5(x) = f(-x)$$

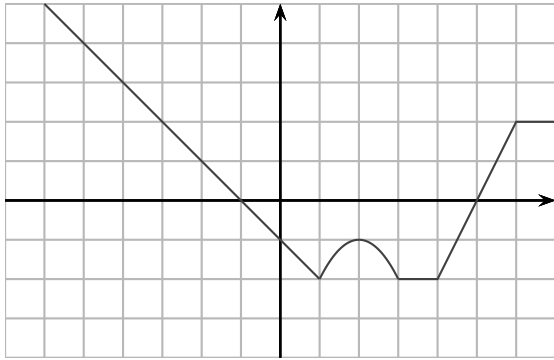


$$f_6(x) = -f(x)$$

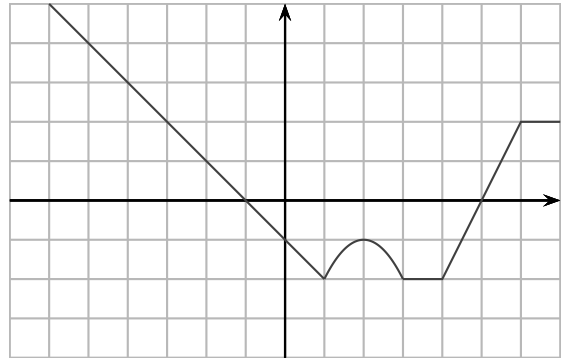


suite au verso

$$f_7(x) = -f(-x)$$



$$f_8(x) = |f(-x)|$$



$$f_9(x) = f(|x|)$$

